

OSS STOCK SIGNALS

Contents

Market Outlook.....	1
Closed Trades / Ratings.....	2
Tomorrow's Signals.....	3
Open Positions	4

Market Outlook

08/14/14 –

I see another move higher tomorrow, then a dip next week followed by another move higher, and then the market tanks around the end of the month. Last week of the month looks BAD.

--Rob

RATING SCALE: (-2 to +2)

Positive numbers: I like the signal.

Negative numbers: I do not like the signal.

Stats for Closed Trades

Total Trades	124	
Winners	93	75.00%
Avg. Profit	1.87%	

Signals	Description
BTO	Buy To Open
STO	Sell To Open
BTC	Buy To Close
STC	Sell To Close
BTC -- BTO	Close Short Position -- Go Long
STC -- STO	Close Long Position -- Go Short
BTC*	Buy to exit due to stop loss < -4%
STC*	Sell to exit due to stop loss < -4%

Closed Trades / Ratings

Average Profits Per Rating					
ALL	-2	-1	0	+1	+2
1.87%	-0.23%	-0.11%	1.85%	9.03%	1.99%

Closed Trades:		Thursday, August 14, 2014					Avg. Profit	-0.55%
TICKER	SIGNAL	RATING	ENTRY	ENTRY\$	EXIT	EXIST\$	CHG	%
F	BTC - BTO	-2	07/30/14	\$17.52	8/14/2014	\$17.40	-\$0.12	-0.68%
FDX	BTC - BTO		07/28/14	\$150.90	8/14/2014	\$149.64	-\$1.26	-0.83%
GLD	STC - STO		08/08/14	\$126.08	8/14/2014	\$126.24	\$0.16	-0.13%

Tomorrow's Signals

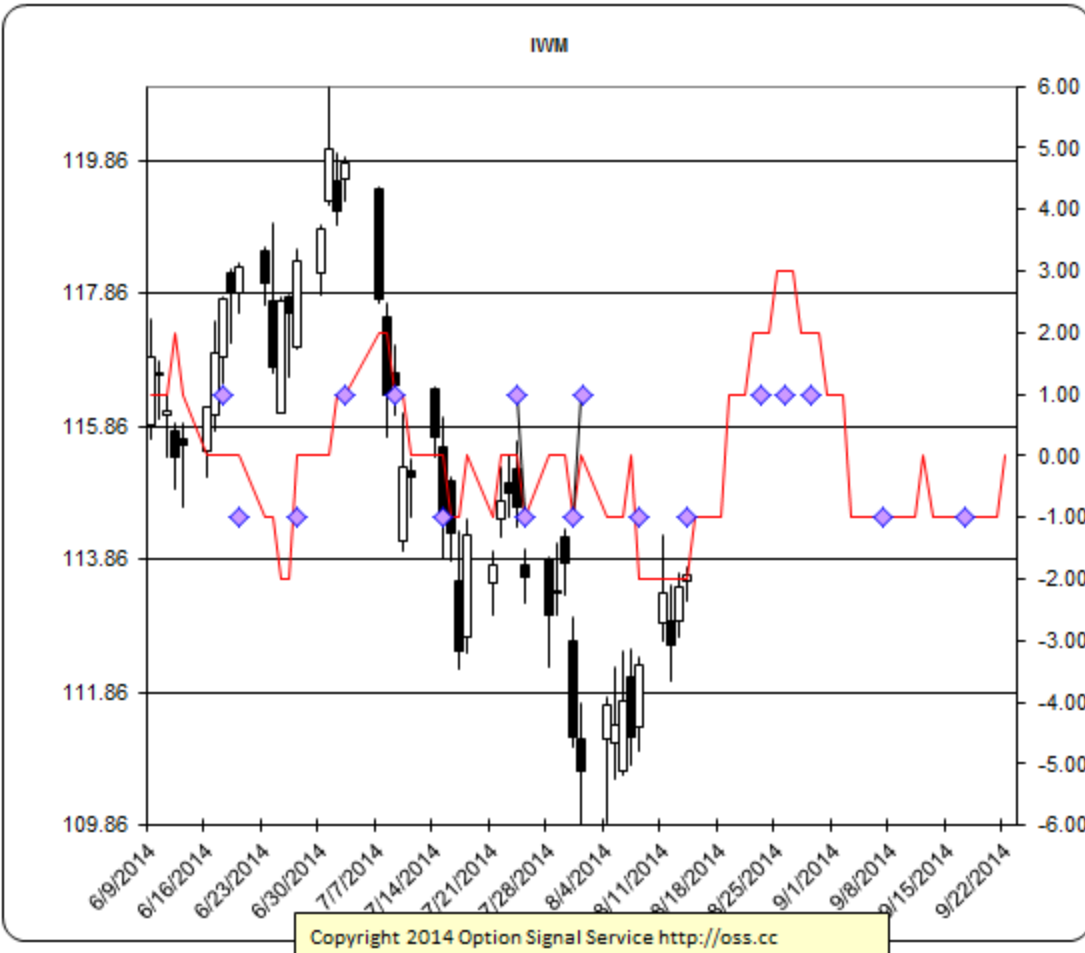
Signals for:	Friday, August 15, 2014			If Action column is blank, follow the signal.	
Ticker	Signal	Rating	Profit%	Action	Comment
TSLA	BTC*		-4.50%		Chart has become more bullish. Was rated at -2
USO	STC*		-6.60%	HOLD	Spiral chart says up.
^OEX	STC - STO		1.20%	HOLD	Friday's Close may be a good exit point.
AMZN	STC - STO		2.76%	HOLD	Friday's Close may be a good exit point.
BA	STC - STO		0.74%		
EBAY	BTC - BTO		-3.28%	HOLD	
JCP	STC - STO		6.80%		Take the profit.
OEF	STC - STO		-0.11%	HOLD	Give it one more day.
SPXL	STC - STO		4.86%		Take the profit.
SPXS	BTC - BTO		5.06%		Take the profit.
SPY	STC - STO		1.66%	HOLD	Friday's Close may be a good exit point.
TLT	STC - STO		2.56%		
VXX	BTC - BTO		-0.52%	HOLD	We were down 14% a few weeks back.
XLB	STC - STO		0.67%		
XLF	STC - STO		1.52%		
XLI	STC - STO		-1.45%		
XLK	STC - STO		1.00%	HOLD	
XLV	STC - STO		1.86%		Take the profit.
XLY	STC - STO		0.22%		
YELP	STC - STO		10.36%		Take the profit.
AMGN	STO	+2			
BIDU	STO	+2			
IWM	STO	+1			It is going to drop a bit, but then move much higher.
YUM	STO				

Open Positions

OPEN TRADES -- Average Profits Per Rating					
ALL	-2	-1	0	+1	+2
0.34%	0.11%	1.01%	-0.06%	1.40%	-0.97%

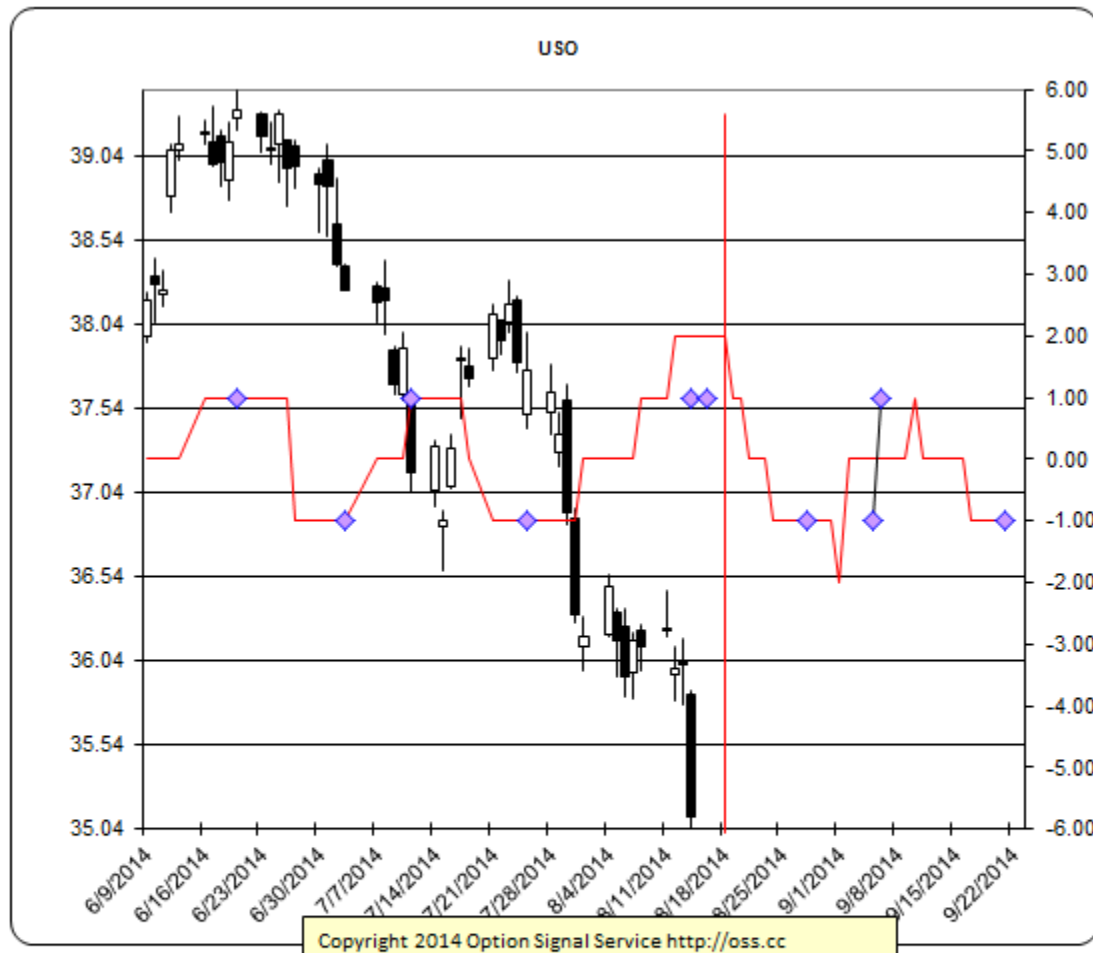
Shorts	16
Longs	23

TICKER	SIGNAL	RATING	ENTRY DATE	ENTER\$	EXIT DATE	CLOSE\$	CHG	%
^OEX	BTC - BTO	-1	08/01/14	\$858.46		\$868.74	\$10.28	1.20%
AIG	STC - STO	+1	8/13/2014	\$53.61		\$54.06	\$0.45	-0.84%
AMZN	BTC - BTO	-1	07/28/14	\$324.25		\$333.21	\$8.96	2.76%
AXP	BTO		08/06/14	\$86.04		\$87.27	\$1.23	1.43%
BA	BTO	+2	07/30/14	\$123.20		\$124.11	\$0.91	0.74%
BAX	BTC - BTO	-2	07/31/14	75.42		\$74.75	-\$0.67	-0.89%
DG	STC - STO	+2	07/30/14	\$56.36		\$57.88	\$1.52	-2.70%
EBAY	SELL		07/14/14	\$51.25		\$52.93	\$1.68	-3.28%
F	STC - STO	+1	8/14/2014	\$17.40		17.43	\$0.03	-0.17%
FDX	STC - STO	+1	8/14/2014	\$149.64		149.64	\$0.00	0.00%
GLD	STC - STO	+1	8/14/2014	\$126.24		126.31	\$0.07	-0.06%
JCP	BTO	+1	08/07/14	\$9.12		\$9.74	\$0.62	6.80%
LLY	BTC - BTO		07/31/14	61.97		\$61.19	-\$0.78	-1.26%
LULU	STO		07/25/14	\$39.13		\$38.75	-\$0.38	0.97%
NFLX	STO	-1	08/08/14	\$450.20		\$450.87	\$0.67	-0.15%
OEF	BTC - BTO		07/31/14	87.25		\$87.15	-\$0.10	-0.11%
PALL	STC - STO	+1	8/13/2014	\$85.79		\$85.91	\$0.12	-0.14%
PPLT	BUY		07/15/14	\$145.66		\$142.46	-\$3.20	-2.20%
SPXL	BTC - BTO		08/01/14	\$72.03		\$75.53	\$3.50	4.86%
SPXS	STC - STO	+1	08/01/14	\$27.09		\$25.72	-\$1.37	5.06%
SPY	BTC - BTO		08/01/14	\$192.56		\$195.76	\$3.20	1.66%
TBT	BTC - BTO	+2	08/08/14	\$57.34		\$56.82	-\$0.52	-0.91%
TLT	BTC - BTO	-2	07/31/14	113.53		\$116.44	\$2.91	2.56%
TSLA	STO	-2	08/07/14	250.12		\$261.38	\$11.26	-4.50%
UNG	STO	+1	08/11/14	21.98		\$21.44	-\$0.54	2.46%
USO	BTC - BTO	+1	07/30/14	\$37.59		\$35.11	-\$2.48	-6.60%
UUP	SELL		07/16/14	\$21.41		\$21.74	\$0.33	-1.54%
VXX	SELL		07/18/14	\$28.73		\$28.88	\$0.15	-0.52%
XLB	BTC - BTO		07/31/14	49.25		\$49.58	\$0.33	0.67%
XLE	BTC - BTO		07/31/14	98.13		\$95.66	-\$2.47	-2.52%
XLF	BTC - BTO	-2	08/01/14	\$22.35		\$22.69	\$0.34	1.52%
XLI	BTO	+1	07/28/14	\$53.78		\$53.00	-\$0.78	-1.45%
XLK	BTC - BTO		08/01/14	\$38.90		\$39.29	\$0.39	1.00%
XLP	STC - STO		8/12/2014	\$44.16		\$44.46	\$0.30	-0.68%
XLV	BTC - BTO	-2	08/01/14	\$60.77		\$61.90	\$1.13	1.86%
XLY	BUY	-1	07/18/14	\$67.10		\$67.25	\$0.15	0.22%
YELP	BTC - BTO	+1	08/01/14	\$67.87		\$74.90	\$7.03	10.36%
YHOO	STC - STO	+2	07/25/14	\$36.00		\$36.36	\$0.36	-1.00%
Z	BTO		8/12/2014	\$135.79		\$133.83	-\$1.96	-1.44%





Currently SHORT



Currently LONG

Should pop before the vertical red line, but this is a commodity, and I have never been sure these indicators work for commodities. Got burnt on UNG.