

OSS Indicators Weekly Review

The OSS indicator Calendar is available through the *OPTION SIGNAL SERVICE* or the *OSS INDICATORS SERVICE*.
Subscription plans can be found at http://oss.cc/oss_Subscription.asp



Contents

OSS WEEKLY MATRIX	2
ASPECTS	5
CHARTS	6

OSS WEEKLY MATRIX

OSS Weekly Matrix

RED = Bearish GREEN = BULLISH BLUE = VOLATILITY Very Bearish Very Bullish Strong Volatility

	Sun 08/25/19	Mon 08/26/19	Tues 08/27/19	Wed 08/28/19	Thur 08/29/19	Fri 08/30/19	Sat 08/31/19
Volatility	0	0	0	1	1	1	4
Day of Month	-1	-1	-1	-1	-1	-1	1
Lunar Phase	2	2	2	2			
Lunar Speed	1	1	1	1			
Lunar Latitude	1	1	0	2			
Lunar Declination	2	3	-1	-1			
Mercury Speed	1	1	1	1			
Mercury Latitude	2	2	2	2			
Mercury Declination	-1	-1	-1	-1			
Venus Speed	1	1	1	1			
Venus Latitude	2	2	2	2			
Venus Declination	-1	-1	-1	-1			
Mars Speed	1	1	1	1			
Mars Latitude	-1	-1	-1	-1			
Mars Declination	-1	-1	-1	-1			
Special							
Adj. Values		-6				-6	-12
Aspect Values	2		2	2			
Bullish/Bearish	10	3	6	8	4	-1	-9
Aspects	♀♂	♀♂ ♂♀		♂♂ ♀♀	♂♂		
Lunar Sign	♏	♏	♏	♏	♏	♏	♏
Luna Phase					●		
A & (Kp) Indexed	10 (4)	10 (4)	16 (4)	8 (3)	5 (2)	5 (2)	5 (2)

On Monday or Tuesday should have higher with the other closing lower due to the Bullish (green) and Bearish (red) indicators.

The high A & (Kp) index for Tuesday was Bearish. So Tuesday was the most likely day to close lower

DJIA		1.05%	-0.47%	1.00%	1.25%	0.16%	3.02%
SPY		1.09%	-0.45%	0.69%	1.28%	-0.04%	2.54%
SPX		1.10%	-0.32%	0.65%	1.27%	0.06%	2.79%
IWM		1.11%	-1.54%	1.16%	1.75%	-0.23%	2.07%
NDX		1.47%	-0.12%	0.29%	1.51%	-0.15%	3.03%
DJT		0.98%	-1.02%	1.77%	2.00%	0.21%	3.98%
GLD		0.00%	0.92%	-0.27%	-0.72%	-0.26%	-0.35%
SLV		1.13%	3.09%	0.85%	-0.49%	0.53%	4.97%
UUP		0.49%	-0.07%	0.24%	0.26%	0.37%	1.28%
TLT		-0.40%	1.54%	0.13%	-0.38%	0.03%	0.90%
Stocks Average *		5.82%	-2.90%	3.79%	7.06%	-0.20%	13.45%

All indicators have a +/- 1-day window in which their energy should be seen.

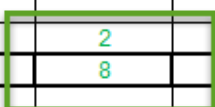
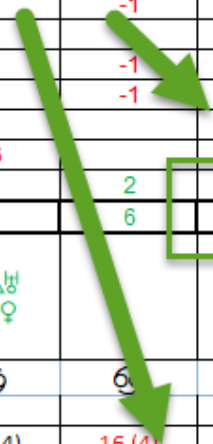
* Daily average for the DJIA, SPY, SPX and IWM

OSS Weekly Matrix

RED = Bearish
 GREEN = BULLISH
 BLUE = VOLATILITY
Very Bearish
Very Bullish
Strong Volatility

	Sun 08/25/19	Mon 08/26/19	Tues 08/27/19	Wed 08/28/19	Thur 08/29/19	Fri 08/30/19	Sat 08/31/19
Volatility	0	0	0	1	1	1	4
Day of Month	-1	-1	-1	-1	-1	-1	1
Lunar Phase	2	2	2	2	2	2	2
Lunar Speed				1	1	1	-1
Lunar Latitude				2	2	2	3
Lunar Declination				-1	-1	-1	-1
Mercury Speed				1	-1	-1	-1
Mercury Latitude				2	2	2	3
Mercury Declination				-1	-1	-1	-1
Venus Speed				1	1	1	1
Venus Latitude				2	2	3	-1
Venus Declination	-1	-1	-1	-1	-1	-1	-1
Mars Speed	1	1		1	1	1	1
Mars Latitude	-1	-1	-1	-1	-1	-1	-1
Mars Declination	-1	-1	-1	-1	-1	-1	-1
Special							
Adj. Values		-6				-6	-12
Aspect Values	2		2	2			
Bullish/Bearish	10	3	6	8	4	-1	-9
Aspects	♀♂	♀♂ ♂♀		♂♂ ♂♀	♂♂		
Lunar Sign	♏	♏	♏	♏	♏	♏	♏
Luna Phase					●		
A & (Kp) Indexed	10 (4)	10 (4)	16 (4)	8 (3)	5 (2)	5 (2)	5 (2)

Wednesday had the greatest chance of closing higher due to the high number found in the Bullish/Bearish row.



DJIA		1.05%	-0.47%	1.00%	1.25%	0.16%	3.02%
SPY		1.09%	-0.45%	0.69%	1.28%	-0.04%	2.54%
SPX		1.10%	-0.32%	0.65%	1.27%	0.06%	2.79%
IWM		1.11%	-1.54%	1.16%	1.75%	-0.23%	2.07%
NDX		1.47%	-0.12%	0.29%	1.51%	-0.15%	3.03%
DJT		0.98%	-1.02%	1.77%	2.00%	0.21%	3.98%
GLD		0.00%	0.92%	-0.27%	-0.72%	-0.26%	-0.35%
SLV		1.13%	3.09%	0.85%	-0.49%	0.53%	4.97%
UUP		0.49%	-0.07%	0.24%	0.26%	0.37%	1.28%
TLT		-0.40%	1.54%	0.13%	-0.38%	0.03%	0.90%
Stocks Average *		5.82%	-2.90%	3.79%	7.06%	-0.20%	13.45%

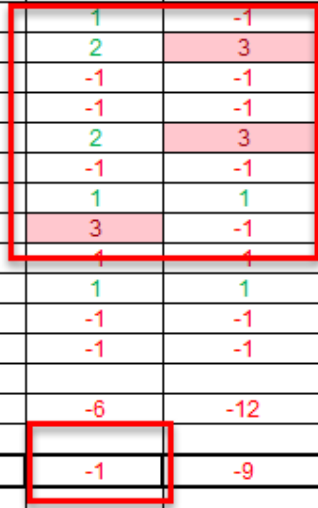
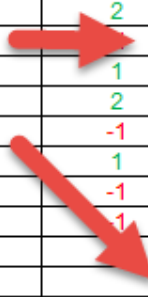
All indicators have a +/- 1-day window in which their energy should be seen.
 * Daily average for the DJIA, SPY, SPX and IWM

OSS Weekly Matrix

RED = Bearish
 GREEN = BULLISH
 BLUE = VOLATILITY
Very Bearish
Very Bullish
Strong Volatility

	Sun 08/25/19	Mon 08/26/19	Tues 08/27/19	Wed 08/28/19	Thur 08/29/19	Fri 08/30/19	Sat 08/31/19
Volatility	0	0	0	1	1	1	4
Day of Month	-1	-1	-1	-1	-1	-1	1
Lunar Phase	2	2	2	2	2	2	2
Lunar Speed	1	1	1	1	1	1	-1
Lunar Latitude	1	1	0	2	2	2	3
Lunar Declination	2	3	-1	-1	-1	-1	-1
Mercury Speed	1				-1	-1	-1
Mercury Latitude	2				2	2	3
Mercury Declination	-1				1	-1	-1
Venus Speed	1				1	1	1
Venus Latitude	2				2	3	-1
Venus Declination	-1	-1	-1	-1	-1	-1	-1
Mars Speed	1	1	1	1	1	1	1
Mars Latitude	-1	-1	-1	-1	-1	-1	-1
Mars Declination	-1	-1	-1	-1	-1	-1	-1
Special							
Adj. Values		-6				-6	-12
Aspect Values	2		2	2			
Bullish/Bearish	10	3	6	8	4	-1	-9
Aspects	♀♂	♀♂ ♂♀		♂♂ ♂♀	♂♂		
Lunar Sign	♏	♏	♏	♏	♏	♏	♏
Luna Phase					●		
A & (Kp) Indexed	10 (4)	10 (4)	16 (4)	8 (3)	5 (2)	5 (2)	5 (2)

The most Bearish day of the week was Friday. It closed mixed.

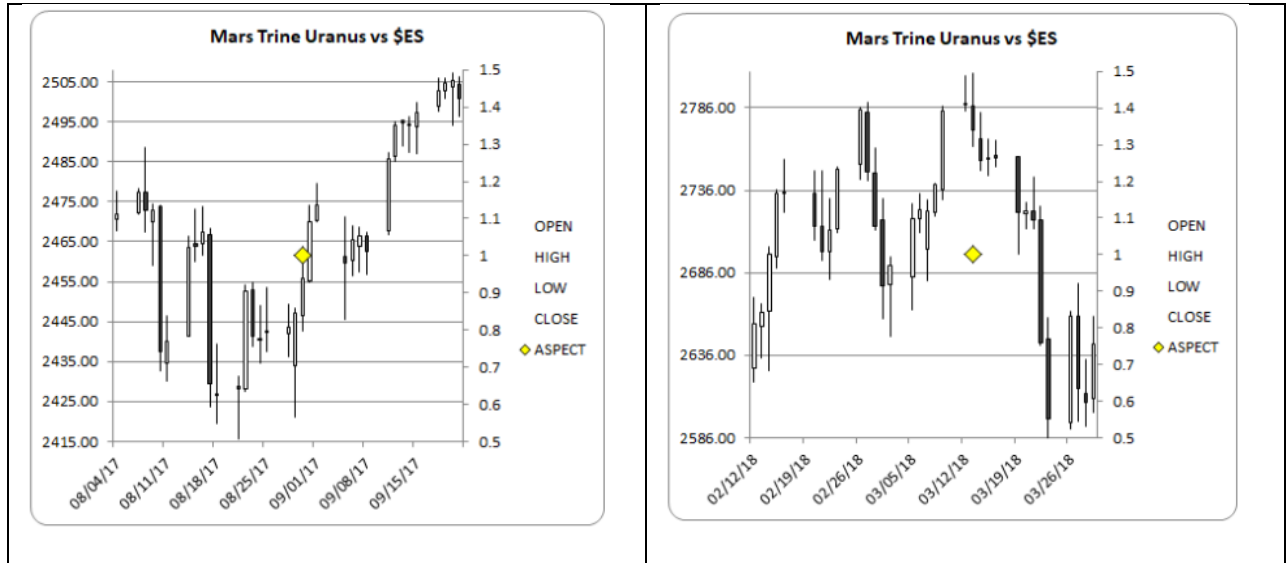


DJIA		1.05%	-0.47%	1.00%	1.25%	0.16%	3.02%
SPY		1.09%	-0.45%	0.69%	1.28%	-0.04%	2.54%
SPX		1.10%	-0.32%	0.65%	1.27%	0.06%	2.79%
IWM		1.11%	-1.54%	1.16%	1.75%	-0.23%	2.07%
NDX		1.47%	-0.12%	0.29%	1.51%	-0.15%	3.03%
DJT		0.98%	-1.02%	1.77%	2.00%	0.21%	3.98%
GLD		0.00%	0.92%	-0.27%	-0.72%	-0.26%	-0.35%
SLV		1.13%	3.09%	0.85%	-0.49%	0.53%	4.97%
UUP		0.49%	-0.07%	0.24%	0.26%	0.37%	1.28%
TLT		-0.40%	1.54%	0.13%	-0.38%	0.03%	0.90%
Stocks Average *		5.82%	-2.90%	3.79%	7.06%	-0.20%	13.45%

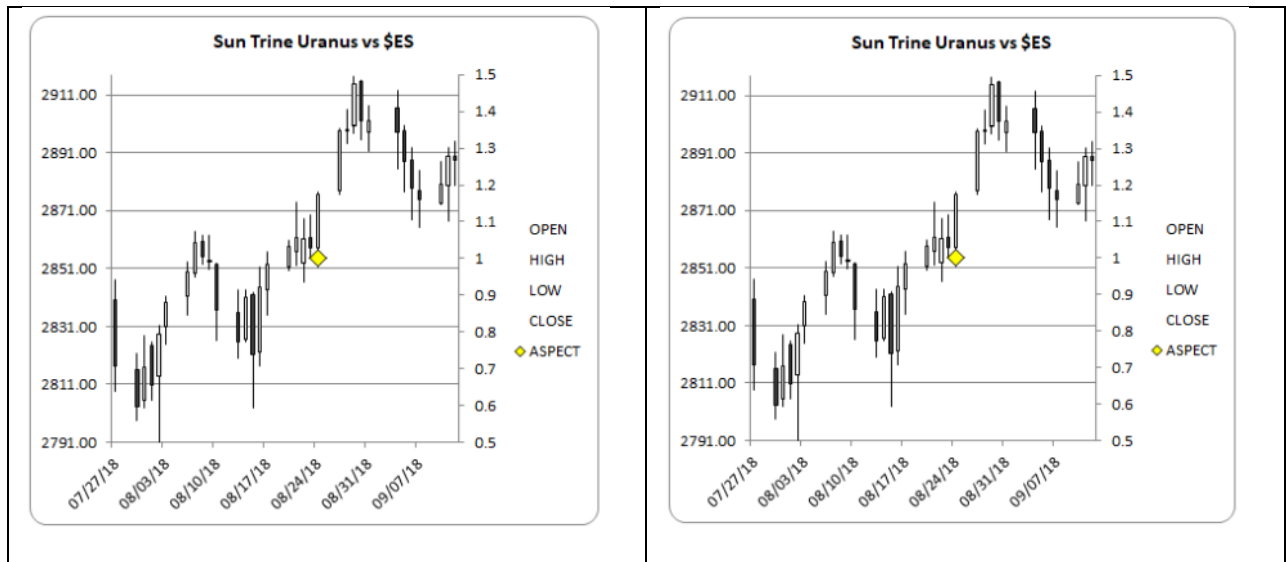
All indicators have a +/- 1-day window in which their energy should be seen.
 * Daily average for the DJIA, SPY, SPX and IWM

ASPECTS

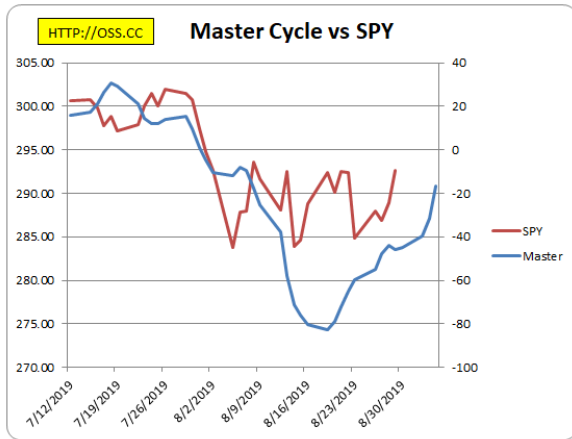
Mars formed a Trine aspect with Uranus this week. This is considered a Bullish aspect. Here is what stocks did the last two times this aspect formed.



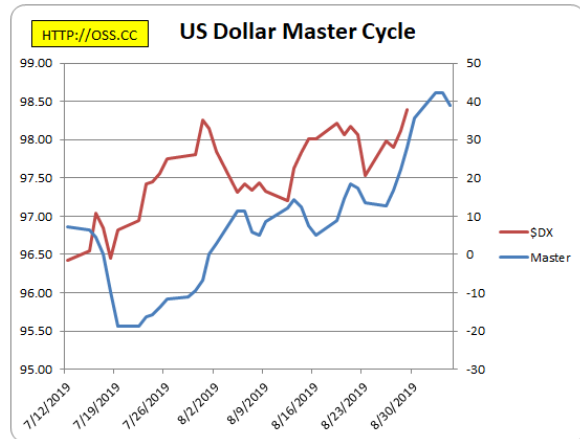
The Sun also made a Trine aspect with Uranus. Trine aspects are always considered Bullish. Here is how the stock market responded the last two times this aspect occurred.



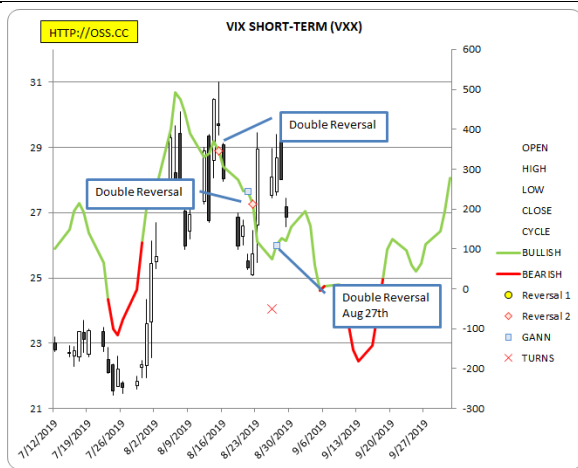
CHARTS



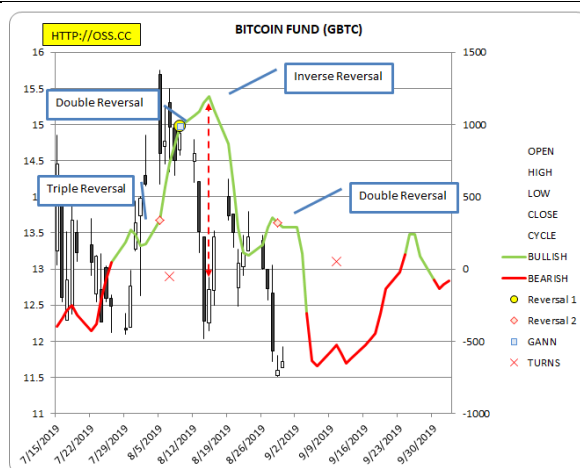
The SPY forecast for the week was Bullish.



The US Dollar forecast was also Bullish



The VXX hit a Double Reversal on Wednesday then pulled-back the next two days.



GBTC hit a Double Reversal on the 29th. The sell-off stopped and price moved higher.